

## AN ANALYSIS OF PROPPIAN'S ARCHETYPES ON CHARACTERS IN ZOOTOPIA MOVIE

Liga Sandi Siregar<sup>1</sup>, Aulia Putri<sup>2</sup>

<sup>1,2</sup> English Language Education, University of Kepulauan Riau, Indonesia

<sup>1</sup>ligasandi07@gmail.com, <sup>2</sup>aulia@fkip.unrika.ac.id

### **Abstract**

*Watching movie has become as one of activity choices by people in spare time. This phenomenon can be influenced by the way It is presented. As one of literary works, movie has fiction elements, intrinsic elements and extrinsic elements. Intrinsic element is the elements that build the literary work itself. The elements consist of plot, theme, background, character, and point of view. Character has an important role in building a fictional story. A character can be divided into some categories, they are protagonist character, antagonist character, typical character, supporting character, neutral character, etc. a characters can be created by use the seven sphere of action which are the Hero, the the Villain, the Donor, the Helper, the Princess, the Dispatcher and the False Hero. Therefore, this research aims focused on analyzing the seven archetypes in Vladimir Propp's Morphology of the Folktale theory appear in Zootopiamovie. Finally, the findings show that there are 6 out of 7 archetypes that appeared in this movie. The Helper was the most dominant Archetypes that showed in the film with 4 data, followed by Hero, Villain, Princess, and Dispatcher with 2 data and the least dominance Archetypes that showed in the movie was Donor with 1 data.*

**Keywords:** Characters, Fiction, Movie, Proppian Archetypes, Zootopia

### **INTRODUCTION**

Movie creates an illusion on the screen is an objective recording of events. Movie can bring expression of feeling including experience, idea, motivation, confidence in the concrete description by using language. According to Smith (2010), movie is series of still images, frame a projected on to a screen. Most of authors make a movie based on reality, movie can represent ideas about all sides of life which happen in human life so that, a movie has become part of that extensive cultural system of constructions that represent social reality (Klarer, 2004, p. 76). A character can be divided into some categories, they are protagonist character, antagonist character, typical character, supporting character, neutral character, etcetera. Their role and the

importance classify them in the movie. Character takes important roles to make the story in a film more alive (Pope, 2005, p. 86). As stated in Nurgiyantoro (2010, p. 164), a discussion about the character along with its characterization is more interesting for people than one about the plot. Keraf (2001, p. 164) states that disposition characteristic of the narrative can be obtained with an overview of the business counts the actions and utterances of the characters (supporting character). In movie, characters can be interpreted as humans or other living creature. The character supports and creates the story as the player in the story itself directly.

Propp (1968) states that, a characters can be created by use the seven sphere of action which are The Hero, The Villain, The Donor, The Helper, The Princess, The Dispatcher and The False Hero (Propp, 1968, p.79-80). Furthermore, According to Jung (cited in Knox, 2003), the term archetype is an explanatory paraphrase of the Platonic eidos, also believed to represent the word form. He maintained that Platonic archetypes are metaphysical ideas, paradigms, or models, and that real things are held to be only copies of these model ideas.

### **Vladimir Propp's Archetypes**

Proppian Archetypes, also known as Propp's *dramatis personae*, is a classification scheme for the major functional roles that characters play in Russian folktales. It was created by Vladimir Propp in the early 20th-century and described in his seminal monograph, *The Morphology of the Folktale*.

Jung (cited in Knox, 2003) has acknowledged that his conceptualization of archetype is influenced by Plato's eidos, which he described as the formulated meaning of a primordial image by which it was represented symbolically.

Propp (1968:79-80) divides the characters into 7 functional characters which are listed as follow:

1. Hero

Propp in *The Difference Character Archetypes Identified by Vladimir Propp* (2016) stated that, The Hero is the protagonist character that reacts to The Donor and The Dispatcher, outwits The Villain, resolves corruption and marries The Princess.

2. Villain

Propp in *The Difference Character Archetypes Identified by Vladimir Propp* (2016) explained, The Villain is the evil, antagonist character that creates struggles for The Hero.

3. Donor

Propp in *The Difference Character Archetypes Identified by Vladimir Propp* (2016) explained, The Donor is a character that donates or imparts their wisdom or magical weapons on The Hero.

4. Helper

Propp in *The Difference Character Archetypes Identified by Vladimir Propp* (2016) stated, The Helper is a sidekick who follows The Hero and helps him

5. Princess

Propp *The Difference Character Archetypes Identified by Vladimir Propp* (2016) explained, The Princess is simply the prize for The Hero, The Princess isn't always a woman and in fact The Princess isn't always human.

6. Dispatcher

Propp in *The Difference Character Archetypes Identified by Vladimir Propp* (2016) stated, The Dispatcher is a character who dispatches the need for The Hero and then sends The Hero on their mission.

7. False Hero

Propp in *The Difference Character Archetypes Identified by Vladimir Propp* (2016) stated, The False Hero is a character that appears to be heroic and may be mistaken as the real hero.

## METHODOLOGY

The researcher used descriptive qualitative method in order to described and explained what would be interpreted from the object of the research. There searcher used the text and dialogues of Zootopia Movie as the data in this descriptive qualitative study. Meanwhile, the researcher used secondary data and primary data in this study. The methods of collecting primary and secondary data differ since primary data are to be originally collected, while in case of secondary data the nature of data. According Kumar (2011:347) secondary data refer to the data which already available in other source and other researcher extract that information, and Creswell (2009:212) stated that the qualitative data collection is to identify the types of the data that will answer their search question.

## RESULT/FINDINGS

In this research, the researcher presents the data analysis based on the the seven archetypes in Vladimir Propp's *Morphology of the Folktale* theory appear in *Zootopia* movie. The researcher analysis seven archetypes such As The Hero, The Villain, The Donor, The Helper, The Princess, The Dispatcher, and The False Hero in *Zootopia* Movie using Propp's perspective.

Table. 1. Seven Archetypes in *Zootopia* Movie

No	The Seven Archetypes	Number
1)	The Hero	Datum 1,2
2)	The Villain	Datum 3,4
3)	The Donor	Datum 5
4)	The Helper	Datum 6,7,8,9
5)	The Princess	Datum 10,11

6) The Dispatcher Datum12,13

Total	13
-------	----

Based on the table above, there are 6 out of 7 archetypes that appeared in this movie. Even though there are only several of it, the sequences are still the same. As the result, based on the 13 data, the researcher found 1 datum for The Hero, 2 data for The Villain, 4 data for The Helper, 2 data for The Princess, 1 datum for The Donor, and 2 data for The Dispatcher.

## DISCUSSION

In this part, the researcher discusses the data analysis that has been found in *Zootopia* Movie. As the audience of the movie, the researcher identified seven archetypes based on Propp's theory. The researcher analyzed seven archetypes based on perspective Vladimir Propp's theory.

Based on the explanation above, the researcher classified into seven archetypes as follows:

### 1. Hero

#### Datum 1:



Figure 4.1. *Zootopia* Movie, 2016; (00.30.36)

Mrs. Otterton : "My husband has been missing for 10 days. His name is Emmitt Otterton. He's a florist. We have two beautiful children. He would never just disappear. Please, there's got to be somebody to find my Emmitt. "

Judy: "Mrs. Otterton, I will find him!"

From the explanation and the dialogue between Judy and Mrs. Otterton above it can be concluded that Judy is the hero in Zootopia movie. In which Mrs. Otterton says that “My husband has been missing for 10 days. Please, there’s somebody to find my emmit”, then Judy came and said “Mrs. Otterton i will find him”. That dialogue tells us that Judy help Mrs. Otterton to find her missing husband. It shows us that Judy is The Hero character in Zootopia Movie, the action that shows Judy is The Hero of the story is when he finds and saves Mr. Otterton.

**Datum 2:**



*Figure 4.2. Zootopia movie, 2016; (01;26;55)*

Bellwether : “Judy!. I’m so proud of you, Judy. You did just a super job! I’ll go ahead and I’ll take that case now. Get them”

Judy : “Mayor Bellwether! We found out what’s happening. Someone’s darting predators with a serum. That’s what’s making them go savage. Thank you, ma’am. How did you know where to find us?. Uh, you know what? I think Nick and I will just take this to the ZPD. Run.”

Based on the explanation above, it fits with what Propp says (1968), that The Hero is the protagonist character that outwits The Villain. The action that shows Judy is The Hero of the story is by fighting

against The Villain as she refuses to hand the serum. The reason researcher puts datum 2 only to prove and to confirm that Judy is The Hero in the Zootopia movie.

## 2. Villain

### Datum 3:



Figure 4.3. Zootopia movie, 2016; (01;28;49)

Bellwether: “Well, you should have just stayed. on the carrot farm, huh? It really is too bad. I did like you. No, of course not. He is. Yes, police! There's a savage fox. in the Natural History Museum. Officer Hopps is down! Please, hurry. Oh, but he can't help it, can he? Since preds are just biologically predisposed to be savages. Gosh. Think of the headline! "Hero cop killed by savage fox." Yeah, pretty much. Fear always works. And I'll dart every predator. in Zootopia to keep it that way. Bye-bye, bunny. What? I framed Lionheart. I can frame you, too. It's my word against yours.”

Judy: “What are you going to do? Kill me? No! Oh, Nick! No. Nick, don't do this. Fight it. So that's it? Prey fears predator. and you stay in power? It won't work! Oh, Nick. No. Bleh. Blood! Blood! Blood and death. What you've got in the weapon there? Those are blueberries. From my family's farm. Ooh, actually. it's your word against yours. It's called a hustle, sweetheart. Boom.”

Nick: “All right, you know, you're milking it. Besides, I think we got it. I think we got it. We got it up there, thank you, Yakety-yak! You laid it all out beautifully. Yeah... Oh, are you looking for the serum? Well, it's right here. They are delicious. You should try some.”

Based on the explanation above, Bellwether fulfills the constituent of a Villain, According to Proop (1968), the constituent of The Villain is a fight or other forms of struggle with The Hero. It can be seen from the dialogue between Judy and Bellwether. When Bellwether possesses the serum then Judy says “What are you going to do? Kill me?” then she replies “No, of course not. He is” then she shot Nick using the serum. It is very clear that Bellwether is The Villain.

**Datum 4:**



*Figure 4.3. Zootopia movie, 2016; (00;52;37)*

From the explanation and the scene above, the researcher concludes that Manchas also fulfill the constituent of a Villain in the Zootopia Movie. Chasing and attacking Nick and Judy are the action shows in the movie that Manchas also The Villain of the story.

**3. Donor**

**Datum 5:**



*Figure 4.4. Zootopia movie, 2016; (00;56;36)*

Nick : “Never let them see that they get to you. No, I mean, not anymore... but I was small... and emotionally unbalanced like you



once. No, it's true. I think I was 8, or maybe 9... and all I wanted to do... was join the Junior Ranger Scouts. So, my mom scraped to get her enough money. to buy me brand-new uniform. because, by God, I was gonna fit in. Even if I was the only predator in the troop. The only fox. I was gonna be part of a pack. Yeah. Pretty much born ready. I was so proud. I, Nicholas Wilde, promise to be brave... loyal, helpful, and trustworthy. What? No. No! What did I do wrong, you guys? No, please! Tell me! What did I do wrong? I learned two things that day. One. I was never gonna let anyone see that they got to me. If the world's only gonna see a fox. as shifty and untrustworthy. there's no point in trying to be anything else."

Based on the explanation above, the researcher concludes that Nick is The Donor in the Zootopia movie. It is because Nick shows to Judy his wisdom by giving her a wise by not letting anyone humiliated her. It refers to Propp explanation in his book (1968), that Th Donor is a character that donates or imparts their wisdom or magical weapons on The Hero.

#### 4. Helper

##### Datum 6:



Figure 4.5. Zootopia movie, 2016; (00;34;50)

Judy : "Hi! Hello? It's me, again! No. Actually, it's Officer Hopps. and I'm here to ask you some questions about a case. This is important, sir. I think your \$10 worth of popsicles can wait. Please, just look at the picture. You sold Mr. Otterton that Popsicle, right? Do you know him? Fine. Then we'll have to do this the hard way. Nicholas Wilde, you are under arrest. Felony Tax Evasion. I mean, I am just a dumb bunny. but we

are good at multiplying. And if you want this pen, you're going to help me. find this poor, missing otter.”

Nick: “I don't know where he is. I only saw where he went. It's not exactly a place for, uh. a cute little bunny. Okay. You're the boss.”

The Helper is a sidekick who follows The Hero and helps him. From the datum 6 it can be seen from the dialogue between Judy and Nick. The dialogue shows us that Nick will help Judy even when he felt reluctant, but it was necessary if he wanted to get the pen back. Based on Propp explanation, the researcher concludes that Nick is The Helper in the movie because Nick agrees to follow and helps Judy in the mission to find and save Mr. Otterton.

**Datum 7:**



*Figure 4.6. Zootopia movie, 2016; ( 00:55:22)*

Nick : “Uh, no. Sorry. What I said was, "no."She will not be giving you that badge. Look, you give her a clown vest. and a three-wheeled joke-mobile. and two days to solve a case. you guys haven't cracked in two weeks?. Yeah. It's no wonder she needed to get help from a fox. None of you guys were gonna help her, were you?. Ho. Here's the thing, Chief. You gave her the 48 hours. so, technically, we still have. 10 left to find our Mr. Otterton. and that is exactly what we're gonna do. So, if you'll excuse us. we have a very big lead to follow and a case to crack. Good day. Officer Hopps.”

Based on the explanation above it streng then the fact that Nick is The Helper in the Zootopia movie. In this datum, Nick will help Judy and does not feel reluctant anymore. the action that shows Nick is The Helper of the story is when he takes Judy side when Chief Bogo tries to fired Judy.

**Datum 8:**



*Figure 4.7. Zootopia movie, 2016; (00;37;59)*

Judy: Uh.You didn't happen to catch. the license plate number, did you?

Yax: Oh, for sure. It was 2-9 -T-H-D - 0-3 - 0-3. Wow.

Based on the explanation above, it shows that Yax also The Helper in the Zootopia Movie. The action taken Is when he helps and shares an important information when he gives the last license number Mr. Otterton wears in his vehicle. The Helper is a side kick who follows The Hero and help her. It was proven from the dialogue between Judy and Yax.

**Datum 9:**



*Figure 4.8. Zootopia movie, 2016; (00;40;35)*

Judy : “Well, I was hoping you could run a plate for us. We are in a really big hurry.

Flash: Sure. What's the plate number?

Based on the explanation above, it shows that Flash is The Helper category. By helping Judy and Nick tracking Mr. Otterton vehicle is the action taken by Flash. The Helper is a side kick who follows The Hero and help her. It can be seen in the dialogue between Judy and Flash.

## 5. The Princess

### Datum 10:



Figure 4.9. Zootopia movie, 2016;(01;30;48)

Nick : “Besides, I think we got it. I think we got it. You laid it all out beautifully.”

Based on the explanation above, it shows that the case is solved by Judy and Nick. In the Zootopia Movie, Judy lacks since the beginning of the story is why the animals went wild. What does Bellwether do to the animals?. From the dialogue between Judy and Nick “Besides, I think we got it. I think we got it. You laid it all out beautifully”. It can be concluded that they solved the mystery. Judy and Nick finally solve the case and all the questions are answered, that is one of the Princess in Zootopia Movie. It fits by what Propp says (1968), that The Princess is what the hero lacks.

**Datum 11:**



*Figure 4.11. Zootopia movie, 2016; (01;31;34)*

Mrs. Otterton asks Judy to find her husband and it became what The Hero lacks. When Judy finally finds Mr. Otterton that has been missing it becomes the prize or The Princess in the Zootopia movie. The Princess is not always a woman and in fact The Princess is not always human, The Princess is whatever The Hero lacks.

**6. Dispatcher**

**Datum 12:**



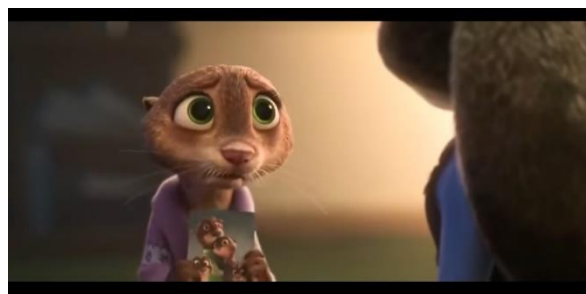
*Figure 4.12. Zootopia movie, 2016;(00;31;56)*

Chief Bogo : “You’re fired. Insubordination!. I will give you 48 hours”

Bellwether : “I just heard Officer Hopps is taking the case. The Mammal Inclusion Initiative. is really starting to pay off. All right. Well, I’d say the case is in good hands.”

The dispatcher is a character who dispatches the need for The Hero and then sends The Hero on their mission. Dispatchers can be combined with roles such as The donor, The Helper or The False hero. It can be concluded that Chief Bogo is The Dispatcher in the movie. It can be seen from the dialogue between him and Judy.

**Datum 13:**



*Figure 4.13. Zootopia movie, 2016;(00;30;54)*

Mrs. Otterton: “Find my Emmitt Bring him home to me and my babies, please”

Based on the explanation of the datum above, it can be concluded that Mrs. Otterton is also The Dispatcher in the Zootopia movie. It can be proved from the dialogue between Mrs. Otterton and Judy. The action taken by Mrs. Otterton as a Helper of the story is when she asks Judy to complete a mission on finding her missing husband, Mr. Otterton. The Dispatcher is a character who dispatched the need for The Hero. The Dispatcher is the one that sends The Hero on their mission.

**CONCLUSION**

Based on the analyzing of the data about seven archetypes in *Zootopia* Movie on the discussion, the researcher concluded that the archetypes happened in the movie as follows: The research found six out of seven archetypes are used in the movie. They were 4 data for The Helper, 2 data for The Hero, 2 data for The

Villain, 2 data for The Princess, and 2 data for The Dispatcher. The least archetype that showed in the movie was The Donor with only 1 datum.

## REFERENCES

- Creswell, J. W. (2009). *Research Design* (3rd ed.). SAGE.
- Keraf, Gorys. 2004. *Komposisi: Sebuah Pengantar Kemahiran Berbahasa*. Flores: Nusa Indah
- Klarer, M. (2004). An Introduction to Literary Studies. In *An Introduction to Literary Studies* (2nd ed.). Routledge.
- Knox, J. (2003). *Archetype, attachment, analysis: Jungian psychology and the emergent mind*. London, England: Routledge
- Kumar, R. (2011). *RESEARCH METHODOLOGY*. (I. Digitals (P) Ltd, Chennai, Ed.) (3rd ed.). Mathura Road New Delhi: SAGE Publication India Pvt Ltd.
- Nurgiyantoro, B. (2002). *Theory of Fiction Analysis (Teori Pengkajian Fiksi)* (4th ed.). Gadjah Mada University Press.
- Pope, R. (2005). *Creativity: Theory, History, Practice* (2nd ed.). Routledge.
- Propp, V. (1968). *Morphology of The Folktale* (2nd ed.). University of Texas Press.
- Smith, T. (2010). Film (Cinema) Perception. *SAGE Encyclopedia of Perception*, 1(1), 10.
- The Different Character Archetypes Identified by Vladimir Propp*. (2016). Retrieved in August 31, 2021